

**Call 48 hours
before you dig**

It's the Law!
1-800-432-4770

Sunshine State One Call of Florida, Inc.

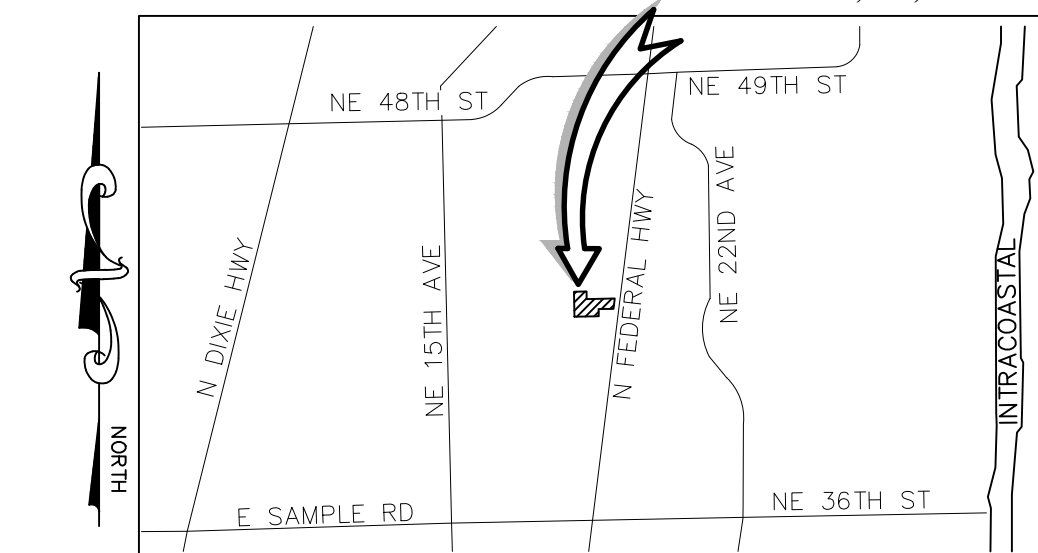
NOTE:
* PRB REQUIRED THIS INVERT
(PLEASE SEE PRB DETAIL)

PROPOSED BUILDING

PROPOSED PAVEMENT

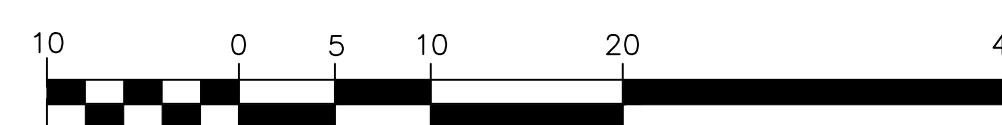
PROPOSED CONCRETE

SITE
4211 N FEDERAL HIGHWAY
POMPANO BEACH, FL, 33064



LOCATION MAP
(NOT TO SCALE)

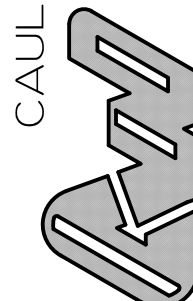
GRAPHIC SCALE



(IN FEET)
1 INCH = 20 FT.

[illegible]

CAULFIELD & WHEELER, INC.



THE SATORI
4211 N FEDERAL HIGHWAY
PROPOSED PAVING
& GRADING PLAN
POMPANO BEACH FL 33064

DATE	05/28/23
DRAWN BY	DJM
F.B./ PG.	----
SCALE	1" = 20'

MATTHEW V. KAHN
PROFESSIONAL ENGINEER
LICENSE NO. 8222
STATE OF FLORIDA
- FOR THE FIRM -
DATE

JOB # 11146
SHT.NO.
PD-2
OF 16 SHEETS